

SOUTHEND BUSINESS PARTNERSHIP NEWSLETTER

JULY 2015



ECONOMY & TOURISM TEAM
Southend-on-Sea Borough Council
Civic Centre, Victoria Avenue
Southend, Essex, SS2 6ER

T. 01702 215022
E. economicd@southend.gov.uk



I was pleased to see so many attend the last SBP Business Briefing at the London Southend Airport, with many new faces, amazingly resulting in over 180 in attendance. The next briefing will be on 24th September and I will contact you soon with further details.

The weather has been tremendous in Southend-on-Sea over the last couple of weeks, and I hope that this has assisted a welcome upturn in trading.

As always there will be a lot of events taking place over the summer including, Village Green, London to Southend Classic Car Run, Music at the Southend Bandstand along with, the Leigh Maritime Festival and the annual Southend Illuminated Carnival Procession in August. Please visit www.visitsouthend.co.uk for more information on these and other events which are taking place throughout the summer.

Nominations for STARS 2015, the annual Southend-on-Sea Borough Council staff recognition event, are now being accepted. You can nominate a team or an individual by clicking [here](#).

As always, our Partnership is keen to hear from local businesses on what we could do to help your business grow. If you have a topic or issue that you would like to see us address at a business briefing or similar, then let us know by contacting the Economic Development Team on: 01702 215022 or email economicd@southend.gov.uk.

I hope you all have an enjoyable summer and I look forward to seeing you all at the next Southend Business Partnership Briefing on 24th September 2015. In the meantime I would encourage you to look at the business opportunities listed below.

Best regards

Murray Foster

Chairman of the Southend Business Partnership

NETWORKING OPPORTUNITIES

In Southend we have a number of different networking events which can be a great way of finding new customers and meeting valuable business contacts.

[FIND OUT MORE](#)

FUNDING/GRANT OPPORTUNITIES

There are plenty of ways for your business to gain a boost through grant and finance opportunities. Follow the link for more details on what's available to you.

[FIND OUT MORE](#)

WHAT'S GOING ON?

EVENTS, BRIEFINGS & WORKSHOPS



SOUTHEND ENERGY & BROADBAND VOUCHERS

Join OVO Energy and Southend-on-Sea Borough Council to learn more about these 2 ground-breaking schemes and how they may be able to help you save money and increase productivity.

[FIND OUT MORE](#)



MARKETING ON A SHOESTRING

Do you know what you need to market your business more effectively but are not sure where to start? This full-day workshop will look at understanding the best marketing activities and how to manage them effectively with limited time and budget.

[FIND OUT MORE](#)



EVENT RISK ASSESSMENTS

Would you like to make sure your events are risk free? This half day practical session will be run by Voluntary Sector Training. The session will also cover mitigating or avoiding risks – a must for any organisations. The session will be held on 13th July.

[FIND OUT MORE](#)



BUSINESS ACADEMY SEMINAR

Prettys will be hosting a Business Academy Seminar, looking at the legal implications of employee ownership and social impact of investing. With keynote speaker will be Digby Chacksfield, CEO of the Eastern Enterprise Hub.

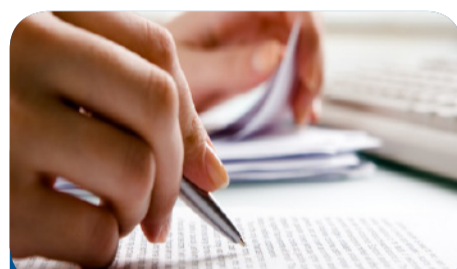
[FIND OUT MORE](#)



INDEPENDENT RETAILER MONTH

A campaign that runs throughout July to highlight the important role smaller, independent retailers play in the communities they serve. Why don't you take part and tell the Economy and Tourism team what you are doing.

[FIND OUT MORE](#)



EVIDENCING THE NEED FOR YOUR WORK

A session to help you answer this question which is posed by many funders. This workshop will help you make your funding applications stand out from the crowd.

[FIND OUT MORE](#)



BUSINESS TO BUSINESS NETWORKING EVENT

Would you like to meet some new potential customers? You are invited to a free business to business networking event. Each business will have a table/space to display literature, photographs, banners or samples.

[FIND OUT MORE](#)



SMALL BUSINESS SATURDAY

As part of Small Business Saturday 100 small businesses will be chosen to be highlighted in the 100 days running up to the event. Applications close on 17th JULY 2015 and successful applicants will be notified by email in August.

[FIND OUT MORE](#)

BUSINESS SPECIFICS

SUPPORT FOR YOUR BUSINESS



BROADBAND VOUCHERS

Does your business need to upgrade your technology to improve your services? Businesses in Southend can now apply for grants of up to £3,000 each to boost your broadband connection as part of a national voucher scheme.

[FIND OUT MORE](#)



YOUR CREATIVE NETWORK

A new networking group called 'Your Creative Network' has been set up by the Southend Economic Development team. This group is especially designed to support businesses in the creative and cultural industries.

[FIND OUT MORE](#)



RETAIL RATE RELIEF

Available to ratepayers of certain retail properties with a rateable value of £50,000 or less that are wholly or mainly being used as shops, restaurants, cafes and drinking establishments in each of the years 2014/15 and 2015/16.

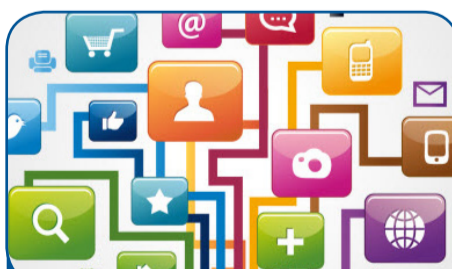
[FIND OUT MORE](#)



UNIVERSAL CREDIT

How Universal Credit can help your business. Makes work pay. Supports a more flexible labour market. Helps people increase their hours and earnings. Uses PAYE in real time to adjust the amount real time information.

[FIND OUT MORE](#)



DIGITAL SKILLS FOR GROWTH

New developments in digital technology offer businesses in Essex significant opportunities to grow. Digital Skills for Growth offers funding for new employees of up to £4,000 (at up to 70% contribution from the programme).

[FIND OUT MORE](#)



APPRENTICESHIPS

Would you like an easy way to find a new member of staff? The Skills Funding Agency have launched a new digital service that allows people to search, register and apply for Apprenticeships and Traineeships in England.

[FIND OUT MORE](#)



THE HIVE: BUSINESS HUB

Work is now complete on the 2nd and 3rd floor of Southend's Beecroft Gallery creating an enterprise centre for new businesses. The Hive offers flexible space from hot-desking to renting formal office space.

[FIND OUT MORE](#)



FREE NHS HEALTH CHECKS

Free NHS Health Checks are coming to a Southend-on-Sea Industrial Estate near you! All people aged 40-74 years without the above diseases (and high blood pressure, high cholesterol) are invited to (once every five years) to attend their GP practice for a check.

[FIND OUT MORE](#)